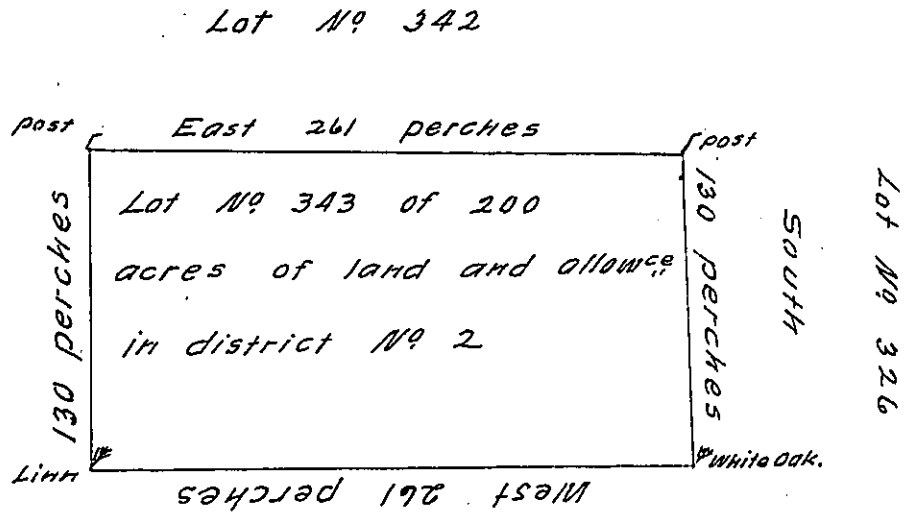


Received of James Trimble a patent to
 Samuel, Anne and Mary
 Logan, children of John Logan,
 late private in the Penna line
 as tenants in common and not as joint
 tenants dated 29th of Decr 1794 for this tract of land.

Abraham B. Claypoole, Captain

Lot No 30 of 500 acres



Lot No 344

James Daugherty, Private

A patent for this tract of land to be made
 to Samuel Logan, Anne Logan and
 Mary Logan children of John Logan,
 Private deceased.

IN TESTIMONY that the above is a copy of the original remaining on file in
 the Department of Internal Affairs of Pennsylvania, made
 conformably to an Act of Assembly approved the 16th day of
 February, 1833, I have hereunto set my Hand and caused
 the Seal of said Department to be affixed at Harrisburg,
 this Sixteenth day of May 1908

Nancy Howell
 Secretary of Internal Affairs.